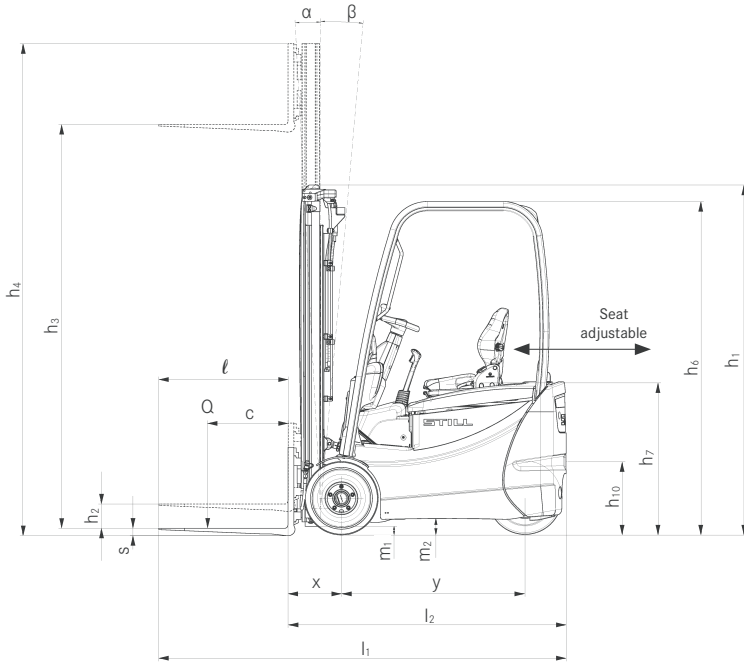


|                     |  |   |                                       |                  |              |
|---------------------|--|---|---------------------------------------|------------------|--------------|
| Dati caratteristici | 1.1  | Produttore  |                                       | STILL            |              |
|                     | 1.2  | Modello   |                                       | <b>RX 50-15</b>  |              |
|                     | 1.2.1  | Codice modello  |                                       | 5065             |              |
|                     | 1.3  | Comando   |                                       | Electric         |              |
|                     | 1.4  | Tipo di guida   |                                       | Seated           |              |
|                     | 1.5  | Classe di portata/carico  | Q                                     | kg               | 1500         |
|                     | 1.6  | Baricentro di carico  | c                                     | mm               | 500          |
|                     | 1.8  | Distanza di carico  | x                                     | mm               | 330          |
|                     | 1.9  | Interasse   | y                                     | mm               | 1190         |
| Pesi                | 2.1  | Peso in marcia (compresa batteria)  |                                       | kg               | 2826         |
|                     | 2.2  | Carico assale, con carico   |                                       | kg               | 3679/647     |
|                     | 2.3  | Carico assale, senza carico   |                                       | kg               | 1133/1693    |
| Gomme/telaio        | 3.1  | Gommatura   |                                       |                  | Superelastic |
|                     | 3.2  | Dimensione gomme  |                                       | mm               | 180/70-8     |
|                     | 3.2  | Dimensione gomme  |                                       | mm               | 180/70-8     |
|                     | 3.5  | Numero di ruote (x = motrici)   |                                       |                  | 2/1x         |
|                     | 3.6  | Larghezza carreggiata   | b <sub>10</sub> /b <sub>11</sub>      | mm               | 840/-        |
|                     | 4.1  | Inclinazione montante/piastra porta forche  | $\alpha/\beta$                        |                  | 3/5          |
|                     | 4.2  | Altezza del montante  | h <sub>1</sub>                        | mm               | 2160         |
|                     | 4.3  | Sollevamento libero   | h <sub>2</sub>                        | mm               | 150          |
|                     | 4.4  | Sollevamento <sup>1</sup>   | h <sub>3</sub>                        | mm               | 3230         |
|                     | 4.5  |   | h <sub>4</sub>                        | mm               | 3805         |
| Dimensioni base     | 4.7  | Altezza sopra il tettuccio di protezione (variante bassa)                         | h <sub>6</sub>                        | mm               | 2050         |
|                     | 4.8  | Altezza sedile rispetto al conducente (variante bassa)                            | h <sub>7</sub>                        | mm               | 953          |
|                     | 4.19   | Lunghezza totale  | l <sub>1</sub>                        |                  | 2575         |
|                     | 4.20   | Lunghezza fino al supporto delle forche   | l <sub>2</sub>                        | mm               | 1775         |
|                     | 4.21   | Larghezza totale  | b <sub>1</sub>                        | mm               | 990          |
|                     | 4.22   | Dimensioni forche   | s/e/l                                 | mm               | 35/80/800    |
|                     | 4.23   | Piastra portaforche a norma ISO 2328, classe/forma A, B                           |                                       | mm               | ISO II/A     |
|                     | 4.24   | Larghezza piastra porta forche  | b <sub>3</sub>                        | mm               | 980          |
|                     | 4.31   | Altezza libera dal suolo sotto il montante, con carico                            | m <sub>1</sub>                        | mm               | 90           |
|                     | 4.32   | Altezza da terra del centro assale  | m <sub>2</sub>                        | mm               | 90           |
|                     | 4.34.1   | Larghezza delle corsie con pallet 1000 x 1200 in senso trasversale <sup>3,4</sup> | A <sub>st</sub>                       | mm               | 3104         |
| 4.34.2              | Larghezza delle corsie con pallet 800 x 1200 in senso longitudinale <sup>3,4</sup> | A <sub>st</sub>   | mm                                    | 3226             |              |
| 4.35                | Raggio di sterzata   | W <sub>a</sub>  | mm                                    | 1445             |              |
| Dati performance    | 5.1  | Velocità di marcia  | con carico /senza carico              | km/h             | 12.0/12.5    |
|                     | 5.2  | Velocità di sollevamento  | con carico /senza carico              | m/s              | 0.32/0.54    |
|                     | 5.3  | Velocità di abbassamento  | con carico /senza carico              | m/s              | 0.54/0.60    |
|                     | 5.5  | Forza di trazione   | con carico /senza carico              | N                | 1280/1670    |
|                     | 5.6  | Max. forza di trazione  | con carico /senza carico              | N                | 3770/7150    |
|                     | 5.7  | Pendenza superabile   | con carico /senza carico              | %                | 4.0/8.0      |
|                     | 5.8  | Max. pendenza superabile  | con carico /senza carico              | %                | 19.0/25.0    |
|                     | 5.9  | Tempo di accelerazione  | con carico /senza carico              | s                | 5.5/4.9      |
|                     | 5.10   | Freno di servizio   |                                       |                  | Hydraulic    |
|                     | Motore elettrico   | 6.1   | Motore di trazione, potenza S3 60 min |                  | kW           |
| 6.2                 |  | Motore di sollevamento, potenza al 15%  |                                       | kW               | 7.6          |
| 6.3                 |  | Batteria conforme a DIN 43531/35/36 A, B, C, no                                   |                                       |                  | DIN 43535 A  |
| 6.4                 |  | Tensione batteria   |                                       | V                | 24           |
| 6.4.1               |  | Capacità batteria   |                                       | Ah               | 920          |
| 6.5                 |  | Peso batteria   |                                       | kg               | 676          |
| 6.6                 |  | Consumo di energia  |                                       | kWh/h            | 4.8          |
| Altro               | 10.1   | Pressione di esercizio per attrezzature supplementari                             |                                       | bar              | 230          |
|                     | 10.2   | Portata olio per accessori  |                                       | l/min            | 30           |
|                     | 10.7   | Livello di pressione sonora L <sub>PAZ</sub> (sedile conducente) <sup>2</sup>     |                                       | dB(A)            | 63.9         |
|                     |  | Vibrazione del corpo umano: accelerazione secondo EN 13059                        |                                       | m/s <sup>2</sup> | <0.7         |

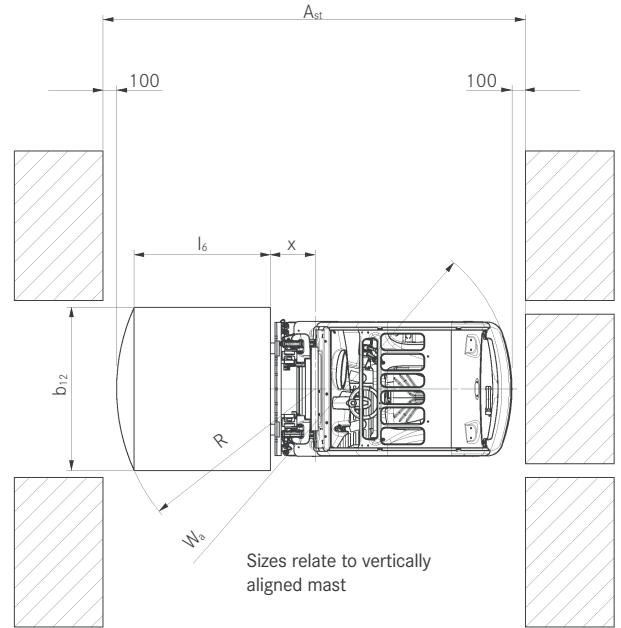


<sup>1</sup> The nominal lift stated includes the tyre deflection and tyre diameter tolerances

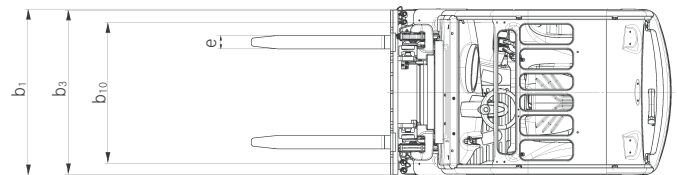
<sup>2</sup> No cab; different values with cab



Side view



Top view



Top view

**Portate base**

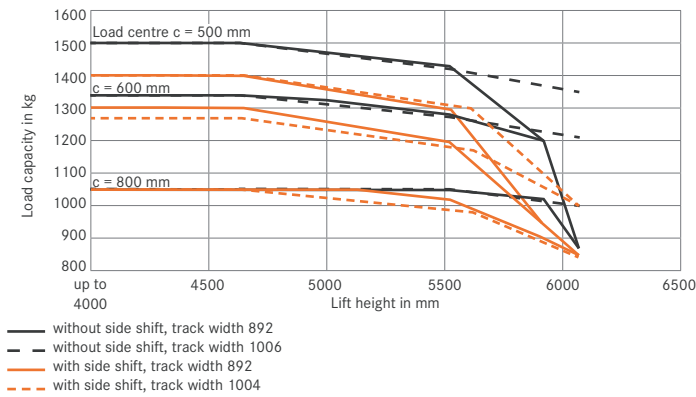
|              | Standard Performance | Pendenza | Tratto massimo in m |
|--------------|----------------------|----------|---------------------|
| Con carico   |                      | 19%      | -                   |
|              |                      | 15%      | 959                 |
|              |                      | 10%      | 3129                |
|              |                      | 5%       | 5479                |
| Senza carico |                      | 25%      | 940                 |
|              |                      | 20%      | 1755                |
|              |                      | 15%      | 3997                |
|              |                      | 10%      | 5094                |
|              |                      | 5%       | 7468                |

Calcestruzzo asciutto ruvido = valore di attrito 0,80  
 Batteria: standard come indicato nelle specifiche tecniche  
 La velocità è variabile

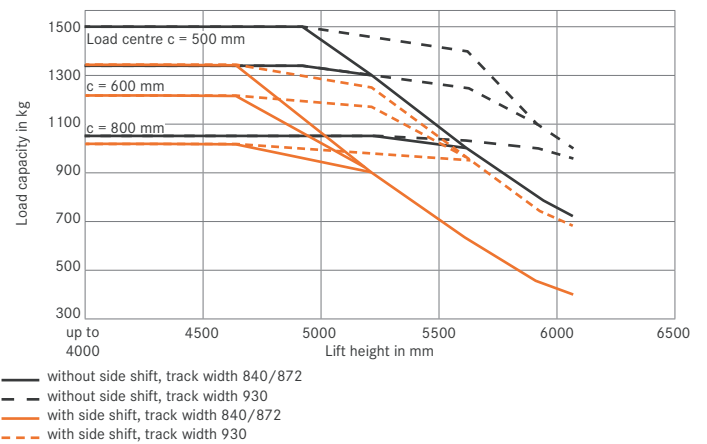
**Truck widths**

|       |  | Truck width $b_1$ | Track width front $b_{10}$ |
|-------|--|-------------------|----------------------------|
| Tyres | Superelastic 180/70-8 (only Trelleborg Rota tyres)   | mm 990            | 840                        |
|       | Superelastic 180/70-8 (all other Superelastic tyres) | mm 1028           | 872                        |
|       | Superelastic 200/50-10                               | mm 1137           | 930                        |
|       | Solid rubber 18 x 7 x 12 1/8                         | mm 1078           | 892                        |
|       | Solid rubber 18 x 7 x 12 1/8                         | mm 1192           | 1004                       |

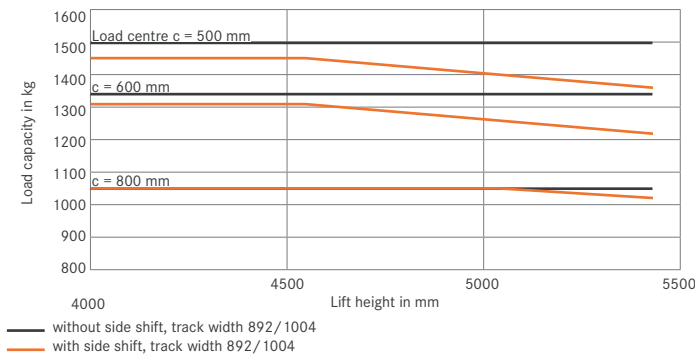
**RX 50-15 triplex mast, solid rubber tyres**



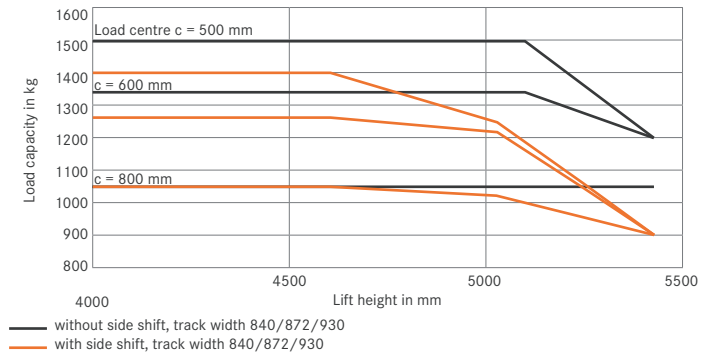
**RX 50-15 triplex mast, Superelastic tyres**



**RX 50-15 Telescopic/HiLo mast, solid rubber tyres**



**RX 50-15 Telescopic/HiLo mast, Superelastic tyres**



|               |                               | HiLo mast        |                 |                                   |      |      |      |      |      |      |      |
|---------------|-------------------------------|------------------|-----------------|-----------------------------------|------|------|------|------|------|------|------|
| RX 50-15      | Nominal lift                  | $h_3$            | mm              | 2975                              | 3175 | 3375 | 3575 | 3975 |      |      |      |
|               | Overall height                | $h_1$            | mm              | 1960                              | 2060 | 2160 | 2260 | 2460 |      |      |      |
|               | Free lift <sup>1,2</sup>      | $h_2$            | mm              | 1405                              | 1505 | 1605 | 1705 | 1905 |      |      |      |
|               | Maximum height <sup>1,2</sup> | $h_4$            | mm              | 3550                              | 3750 | 3950 | 4150 | 4550 |      |      |      |
|               | Tilt of mast/fork carriage    | forward/backward | $\alpha/\beta$  | ° 3/5                             |      |      |      |      |      |      |      |
|               | Adjustable fork spread        |                  | mm              | 216 / 368 / 445 / 521 / 673 / 760 |      |      |      |      |      |      |      |
|               | Tyres                         | front/rear       |                 | 180/70-8 / 180/70-8               |      |      |      |      |      |      |      |
|               | Track                         | front/rear       | $b_{10}/b_{11}$ | mm 810/0                          |      |      |      |      |      |      |      |
| Maximum width |                               | $b_1$            | mm 1028         |                                   |      |      |      |      |      |      |      |
|               |                               | Telescopic mast  |                 |                                   |      |      |      |      |      |      |      |
| RX 50-15      | Nominal lift                  | $h_3$            | mm              | 2830                              | 3030 | 3230 | 3530 | 3930 | 4230 | 4730 | 5430 |
|               | Overall height                | $h_1$            | mm              | 1960                              | 2060 | 2160 | 2310 | 2510 | 2660 | 2910 | 3260 |
|               | Free lift <sup>1,2</sup>      | $h_2$            | mm              | 150                               | 150  | 150  | 150  | 150  | 150  | 150  | 150  |
|               | Maximum height <sup>1,2</sup> | $h_4$            | mm              | 3405                              | 3605 | 3805 | 4105 | 4505 | 4805 | 5305 | 6005 |
|               | Tilt of mast/fork carriage    | forward/backward | $\alpha/\beta$  | ° 3/5                             |      |      |      |      |      |      |      |
|               | Adjustable fork spread        |                  | mm              | 216 / 368 / 445 / 521 / 673 / 760 |      |      |      |      |      |      |      |
|               | Tyres                         | front/rear       |                 | 180/70-8 / 180/70-8               |      |      |      |      |      |      |      |
|               | Track                         | front/rear       | $b_{10}/b_{11}$ | mm 810/0                          |      |      |      |      |      |      |      |
| Maximum width |                               | $b_1$            | mm 1028         |                                   |      |      |      |      |      |      |      |
|               |                               | Triplex mast     |                 |                                   |      |      |      |      |      |      |      |
| RX 50-15      | Nominal lift                  | $h_3$            | mm              | 4320                              | 4620 | 4920 | 5220 | 5620 | 6070 |      |      |
|               | Overall height                | $h_1$            | mm              | 1960                              | 2060 | 2160 | 2260 | 2460 | 2610 |      |      |
|               | Free lift <sup>1,2</sup>      | $h_2$            | mm              | 1405                              | 1505 | 1605 | 1705 | 1905 | 2005 |      |      |
|               | Maximum height <sup>1,2</sup> | $h_4$            | mm              | 4895                              | 5195 | 5495 | 5795 | 6195 | 6645 |      |      |
|               | Tilt of mast/fork carriage    | forward/backward | $\alpha/\beta$  | ° 3/5                             |      |      |      |      |      |      |      |
|               | Adjustable fork spread        |                  | mm              | 216 / 368 / 445 / 521 / 673 / 760 |      |      |      |      |      |      |      |
|               | Tyres                         | front/rear       |                 | 180/70-8 / 180/70-8               |      |      |      |      |      |      |      |
|               | Track                         | front/rear       | $b_{10}/b_{11}$ | mm 810/0                          |      |      |      |      |      |      |      |
| Maximum width |                               | $b_1$            | mm 1028         |                                   |      |      |      |      |      |      |      |

<sup>1</sup> Fork carriage ISO 2A standard

<sup>2</sup> Deviations depending on 4/6-stop fork carriages

|               |  |   |
|---------------|--|---|
|               | Operating costs kept low thanks to low energy consumption in all operating cycles and long operating intervals   | ● |
|               | One-pedal control, switching the direction of travel using the hydraulic control   | ● |
|               | Double-pedal control   | ○ |
|               | Standard protective roof (without window)  | ● |
|               | Weather protection or tarpaulin cab  | ○ |
|               | Drive-in overhead guard  | ○ |
|               | Low driver's cab for container loading   | ● |
|               | Tinted front windscreen, roof windows made of either green-tinted or Makrolon laminated safety glass, plus windscreen wiper and wash system  | ○ |
| Driver's seat | Built-in storage and drink holder  | ● |
|               | Splash-proof operating unit featuring display and function buttons   | ● |
|               | Pad with clipboard (removable)   | ○ |
|               | MSG 65 leatherette cover   | ● |
|               | Textile cover, airsprung, leatherette cover, lumbar support, height-adjustable back extension, heated seat, extra-wide seat pad  | ○ |
|               | Grab handle on protective roof   | ● |
|               | Horizontal spring plate for driver's seat to minimise human vibrations   | ○ |
|               | Document pocket on the seat back   | ○ |
|               | Roof liner with interior lighting  | ○ |
|               | Radio/MP3 player with USB connection   | ○ |
|               | Protective sunshade and sun blind  | ○ |
|               | Cold storage version, display and hydraulic oil can be used up to -30 °C   | ○ |
|               | Free view mast available in telescopic, HiLo and triplex versions  | ○ |
|               | Load backrest  | ○ |
| Mast          | Mast vertical position   | ○ |
|               | Bellows protect the tilt cylinder from dust and moisture   | ○ |
|               | Stroke shut-off via push button  | ○ |
| Tyres         | Fork wear protection   | ○ |
|               | Single superelastic/SIT system   | ● |
| Hydraulics    | Solid rubber, solid rubber/natural colour, single superelastic/Continental/SIT system, single superelastic/natural colour/SIT system, superelastic/Continental/natural colour/SIT system | ○ |
|               | Noise-optimised hydraulic pump   | ● |
|               | Proportional valve technology for high-precision movements   | ○ |
|               | Custom parametrisation of hydraulic functions  | ○ |
| Drive         | Multi-lever operation  | ● |
|               | Mini-lever with armrest, 2, 3 or 4 levers, Fingertip or joystick   | ○ |
|               | 5 driving programmes   | ● |
|               | Blue-Q energy-saving mode  | ● |
|               | Display showing energy consumption and remaining driving time based on current charge  | ○ |
| Brake         | Maintenance-free engines for driving, steering and lifting   | ● |
|               | Operating hours counter only operational with drive and lifting motor  | ● |
| Safety        | Energy recovery when braking   | ● |
|               | Mechanical parking brake   | ● |
|               | EasyBelt restraint system for quick and safe fastening and unfastening   | ○ |
|               | Sauermann type HRS-E/ERS restraint system or IWS restraint system with strap opening on the left   | ○ |
|               | Headlights and LED lighting performance  | ○ |
|               | Driver-adjusted speed limiter  | ● |
|               | STILL Safety Light warning device, illuminated blue  | ○ |
|               | Assistance system (ATC - Assistance Truck Control): for safe exit/parking and seat belt control  | ○ |
|               | Assistance system (ATC - Assistance Truck Control): speed limiter controlled by steering angle   | ● |
|               | Assistance system (ATC - Assistance Truck Control): speed limited when fork carrier is raised  | ○ |
| Misc.         | Load measuring with ±3% precision  | ○ |
|               | Panoramic mirror   | ○ |
|               | Direction can be changed both left- and right-handed via mini-console  | ○ |
|               | Load detection   | ○ |
|               | FleetManager: access authorisation, shock detection, reports   | ○ |
|               | Towbar   | ○ |

● Standard ○ Optional — Not available

